



# WELCOME

TO THE

## ALLENTOWN TRUCK REROUTE PROJECT ENVIRONMENTAL REVIEW PROCESS COMMUNITY MEETING

### PROJECT CONTACT

Mark Hafs

AllentownTruckReRoute@TukwilaWA.gov



Scan QR code to  
learn more and  
leave a comment!








# PURPOSE AND NEED

The purpose and need for this project is to develop an alternative route to the BNSF Intermodal Facility in Allentown to improve livability and safety in Allentown, without compromising the operations of the intermodal facility.

## TOPICS CURRENTLY BEING CONSIDERED

-  **PHYSICAL ENVIRONMENT**  
Climate, geology, soil type and distribution, groundwater characteristics, air quality, and noise levels
-  **BIOLOGICAL ENVIRONMENT**  
Location and distribution of flora and fauna wildlife characteristics
-  **SOCIO-ECONOMIC AND HEALTH CONDITIONS**  
Demography, culture, heritage sites, social and health status of the people and their environment

### WHAT MAKES A GOOD COMMENT?

Throughout the EIS process, there will be periods during which the public is invited to submit comments.

- All comments must be written, and must be legible.
- Be specific about issues and locations.
- All comments must be submitted during formal comment periods.





# WHERE WE'VE BEEN

## INFORMING STEPS

- 1** BNSF's South Seattle Intermodal Facility is located on the east side of the Allentown neighborhood. For many years, trucks traveling to and from the BNSF facility have accessed it mainly via a route that uses 42nd Ave. S (over the 42nd Ave. S Bridge) and S 124th Street.
- 2** In 2015, the City undertook a study to find a new truck route that would reduce the impacts of trucks in Allentown. The *BNSF Railway Intermodal Facility Access Study* was completed in late 2016.
- 3** The study proposed four alternative truck routes that would not travel through Allentown, and one alternative that considered the impacts of leaving the current truck route in place.
- 4** As part of the study, the City held open houses where the public gave input about the needs of the Allentown community and commented on the proposed truck route alternatives.
- 5** Using the 2016 study as a starting point, the City will now prepare an environmental impact statement (EIS) which will take a more in-depth look at the truck route options identified in the 2016 study, and update the study's findings to include today's conditions, improved project understanding, and additional community input.
- 6** Moving forward with work on the EIS, the City is committed to clear and open communication with the public – of its findings, its intentions, and its actions.



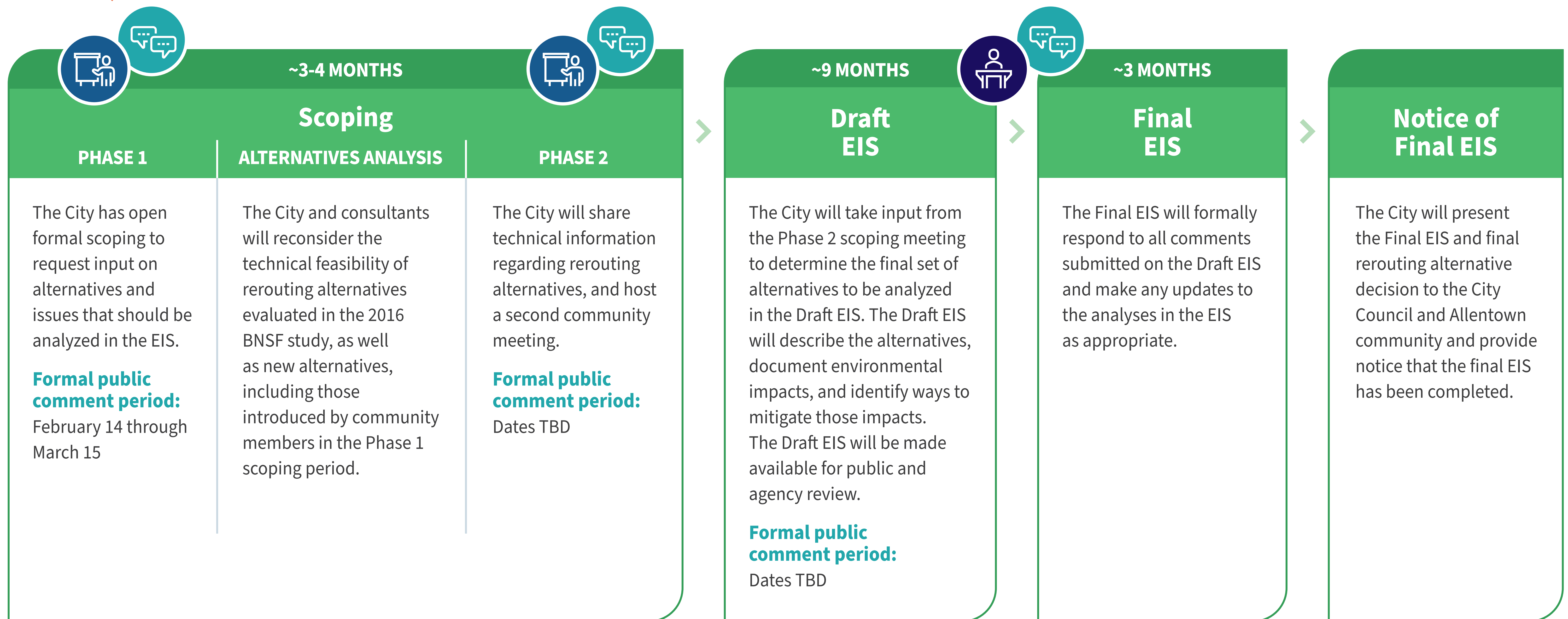




# EIS PROCESS

● Public Meeting ● Public Comment ● Public Hearing

WE ARE HERE



**ALLENTOWN TRUCK REROUTE PROJECT  
ENVIRONMENTAL REVIEW PROCESS**